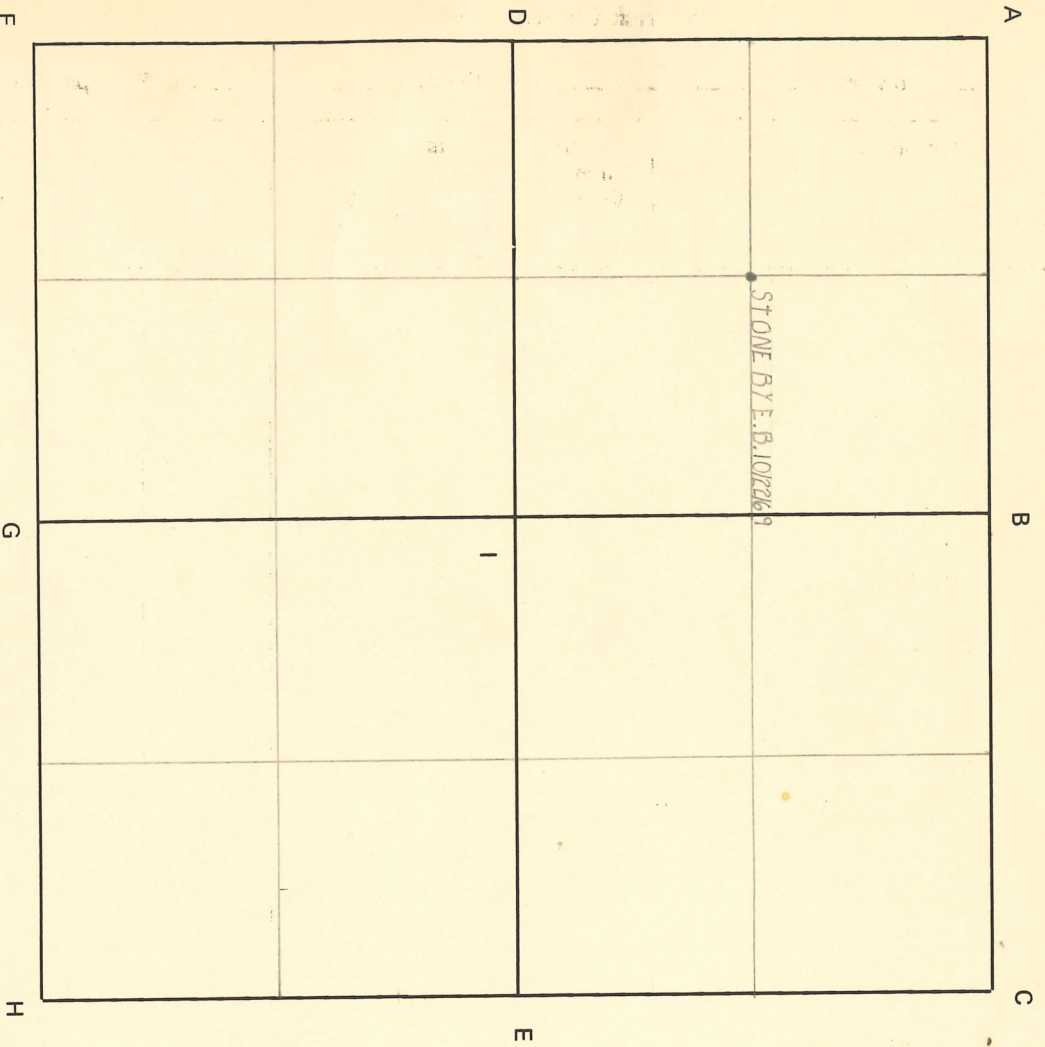


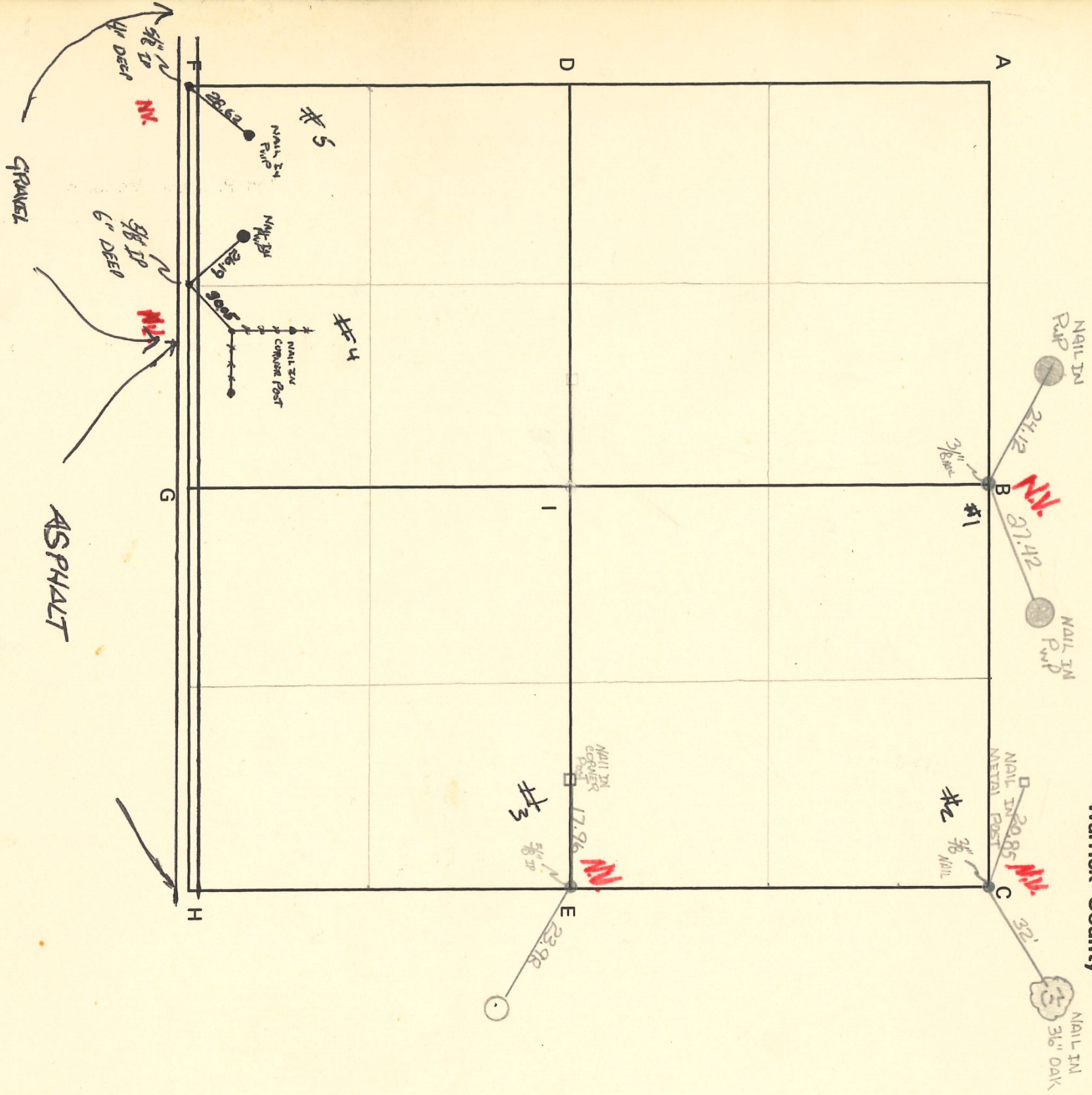
Section 13 Township 3 Range 8 2nd P.M.

CORNER CODE SYSTEM
Warrick County



NOTES

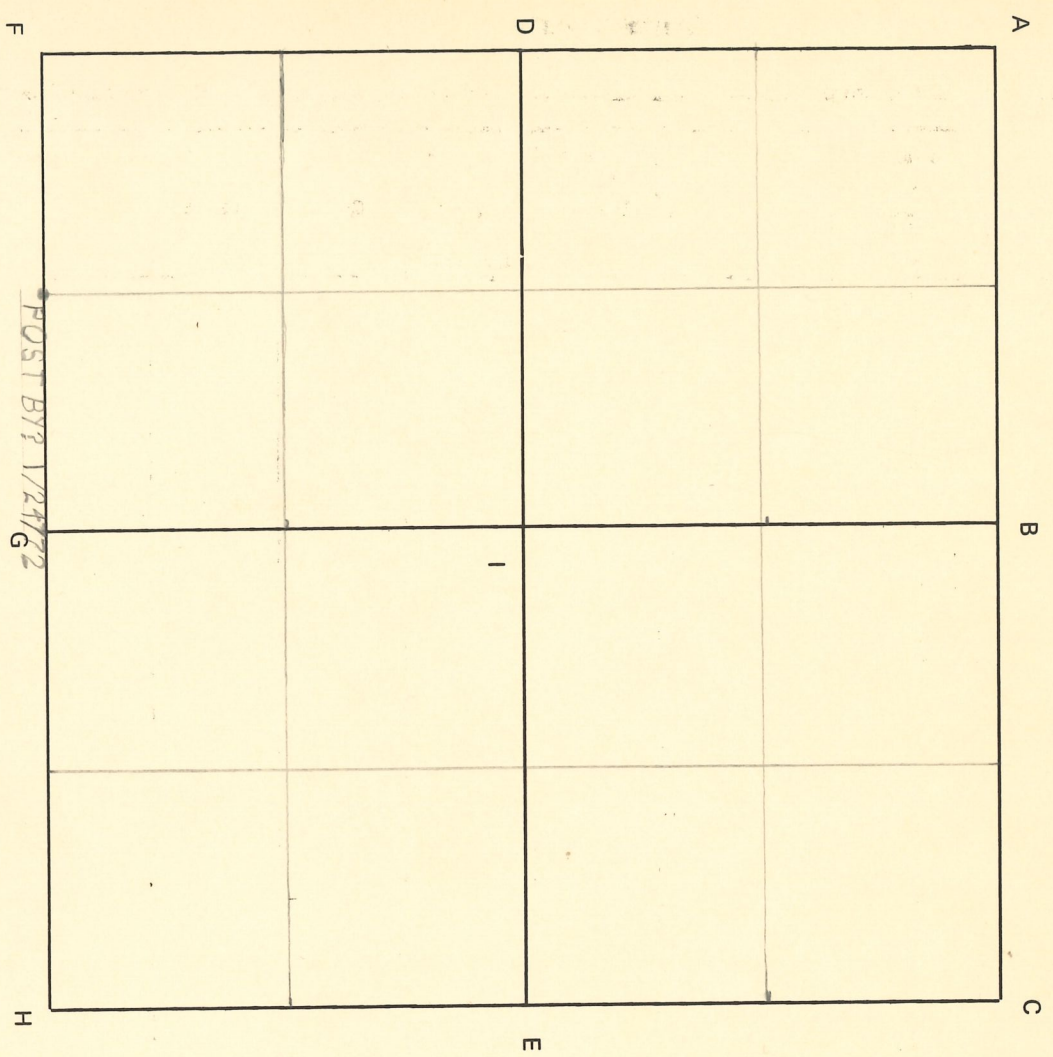
CORNER CODE SYSTEM
Warrick County



NOTES

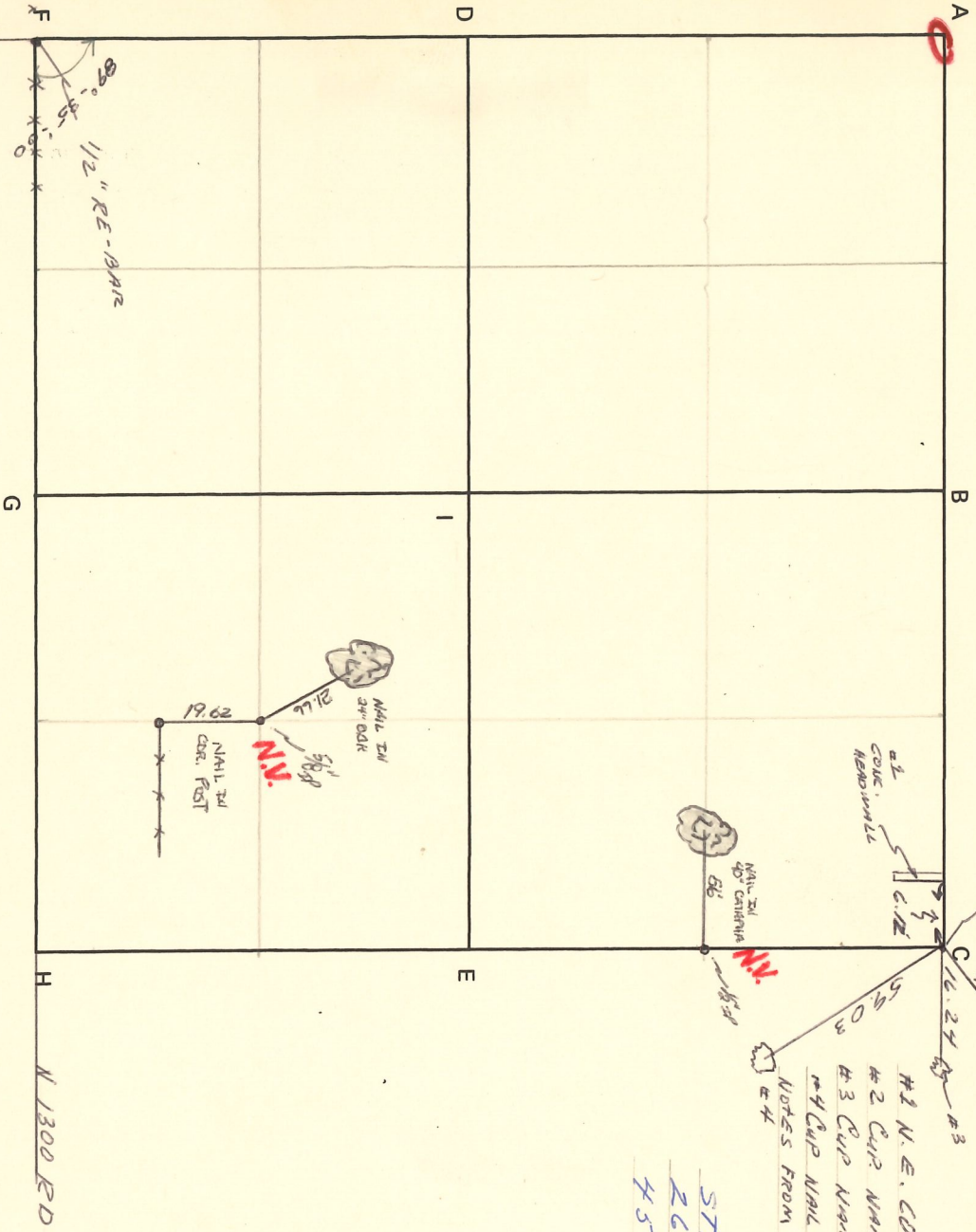
Pike Co.

Section 22 Township 3 Range 8 2nd P.M.
CORNER CODE SYSTEM
Warrick County



NOTES

CORNER CODE SYSTEM
Warrick County

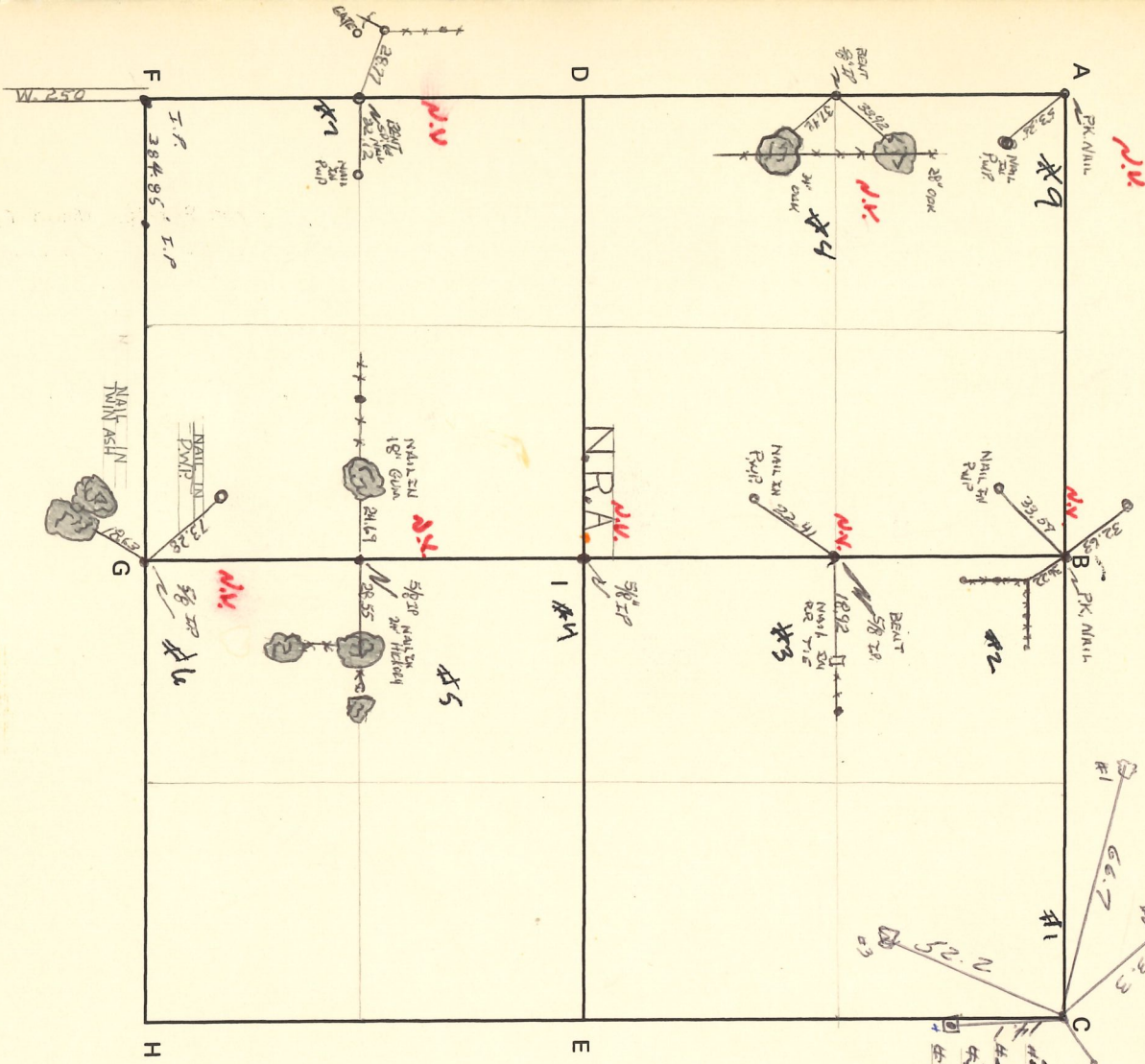


NOTES

#1 N.E. CORNER OF CONC. HEMLOCK DUE WEST @ 6.12'
 #2 CUR NAIL IN SE. SIDE 16" DI OAK N 30'E @ 40.00
 #3 CUR NAIL IN W. SIDE 10" ELM DUE EAST @ 16.24
 #4 CUR NAIL IN W. SIDE 12" ASH S 30 E @ 59.03
 NOTES FROM "Log Creek 1977" book #5 P. 30 by L. Thurston

STATE PLANT COORDS
 26228.75 N
 454189.57 E

CORNER CODE SYSTEM
Warrick County



NOTES

#2 CUP NAIL IN 30° 20' ALL W. ORK N 40° W @ 33.3
 #3 CUP NAIL IN S.E. SIDE 30" W. ORK N 60° W @ 66.7
 #3 24" S.B. HICKORY 540' W @ 52.2 METERS @ 3' ABOVE GROUND
 #4 10" ALL PLE W BIRD HOUSE S 5° W @ 141

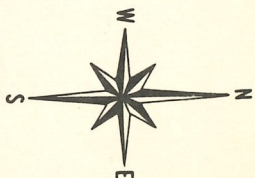
CORNER STONE IS A SANDSTONE APPROX. 24" IN DIA.
 FOUND 18" BELOW SURFACE OF EXISTING GRAVEL ROAD.

STATE PLANE COORD'S

266253.40 N
 448819.43 E

CORNER RECORD
WARRICK COUNTY

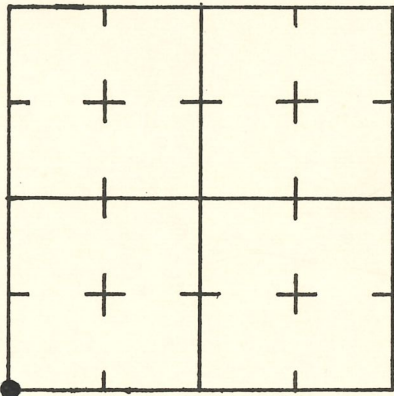
WARRICK COUNTY SURVEYOR
MICHAEL F. FELDBUSCH, L.S.



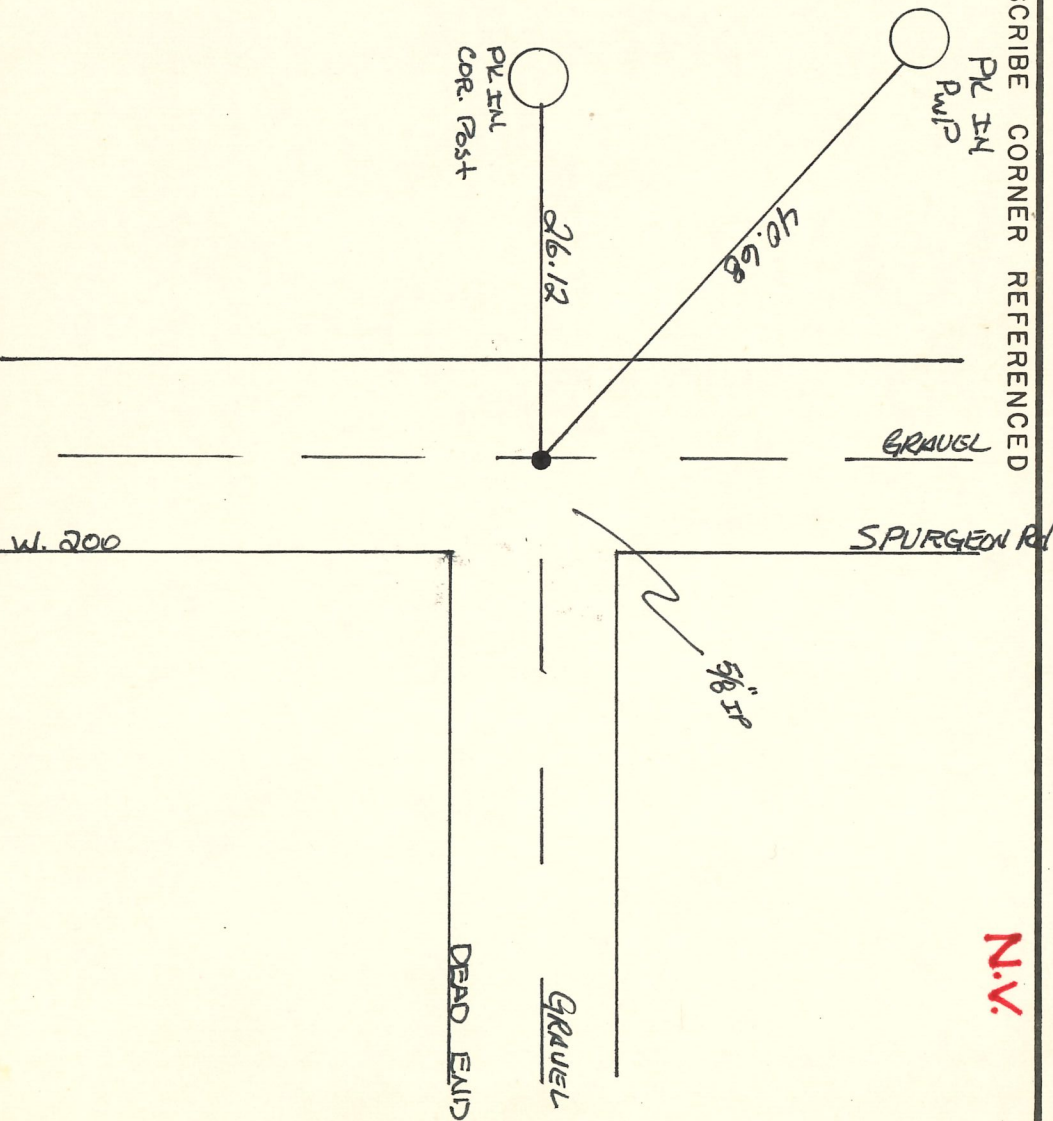
N.V.

DESCRIPTION :
SE CORNER SE 1/4
SECTION 27, T. 3 S., R. 8 W.
2nd PRINCIPAL MERIDIAN

INDICATE CORNER REFERENCED



DESCRIBE CORNER REFERENCED



STATE PLANE COORDINATE DATA

INDIANA ZONE: WEST

X _____

Y _____

ESTABLISHED BY: _____

APPROVED BY _____

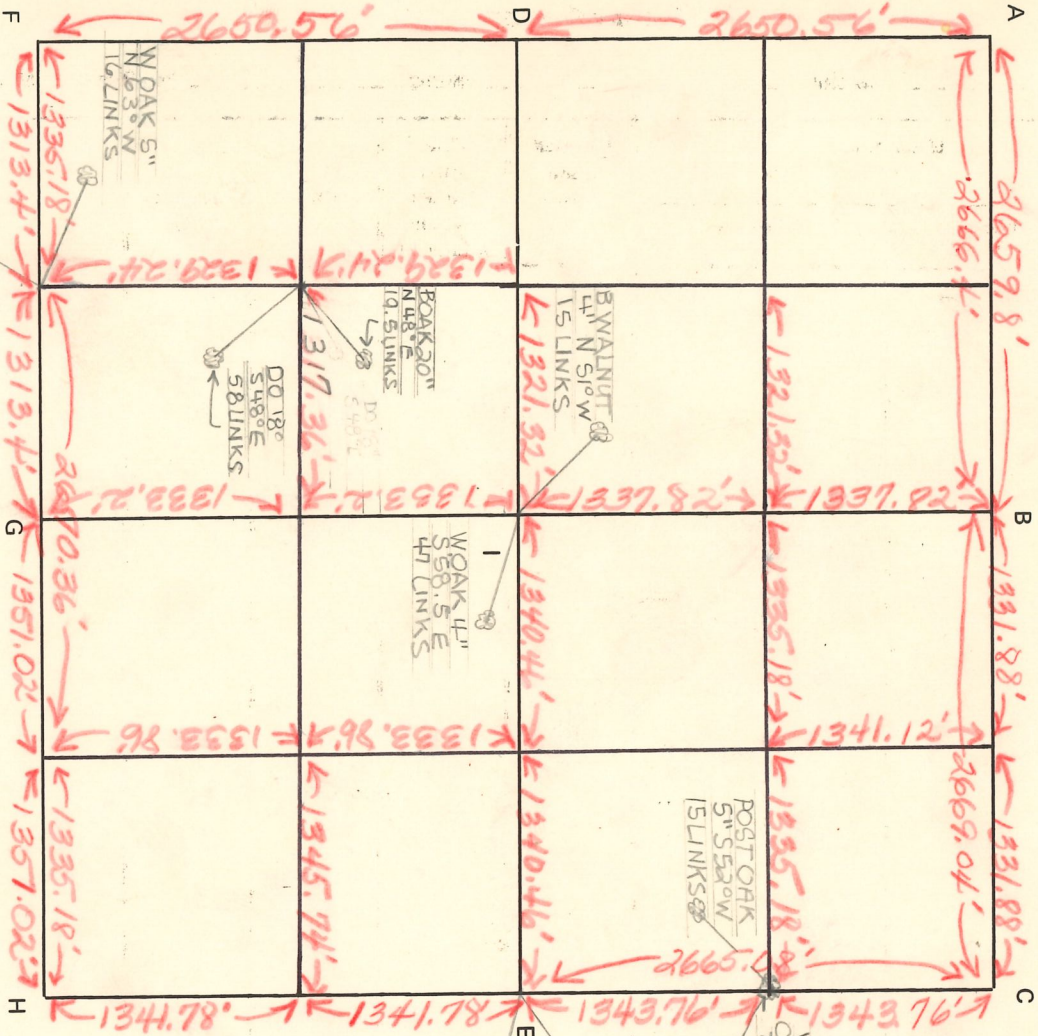
DATE _____

REFERENCED BY: _____

DATE _____

5-6-83

Handwritten signature

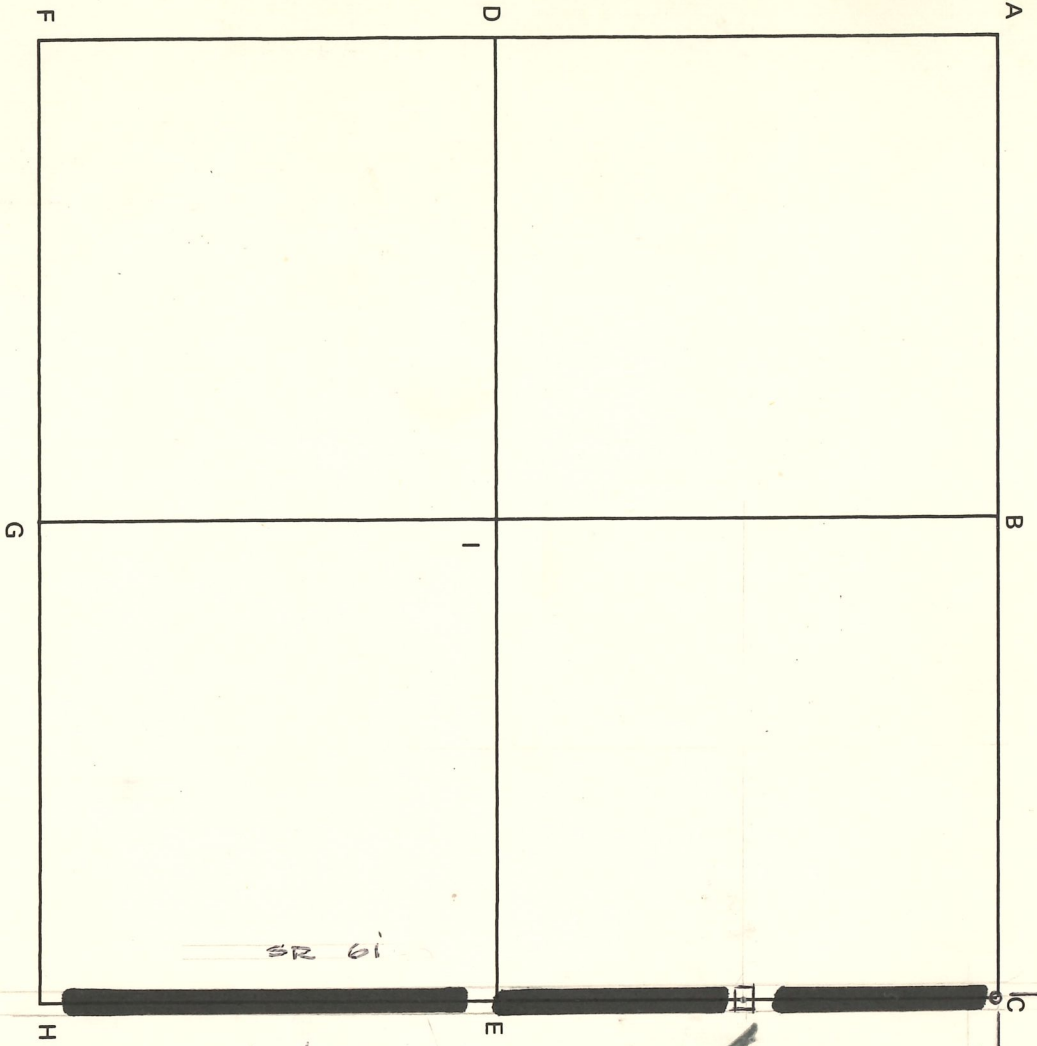


NOTES

Book #1 February 27, 1854
 Book #1 April 9, 1874

Section 28 Township 3 South Range 8 West 2nd P.M.

CORNER CODE SYSTEM
Warrick County



SR 61

30' 1/2" EA. SIDE

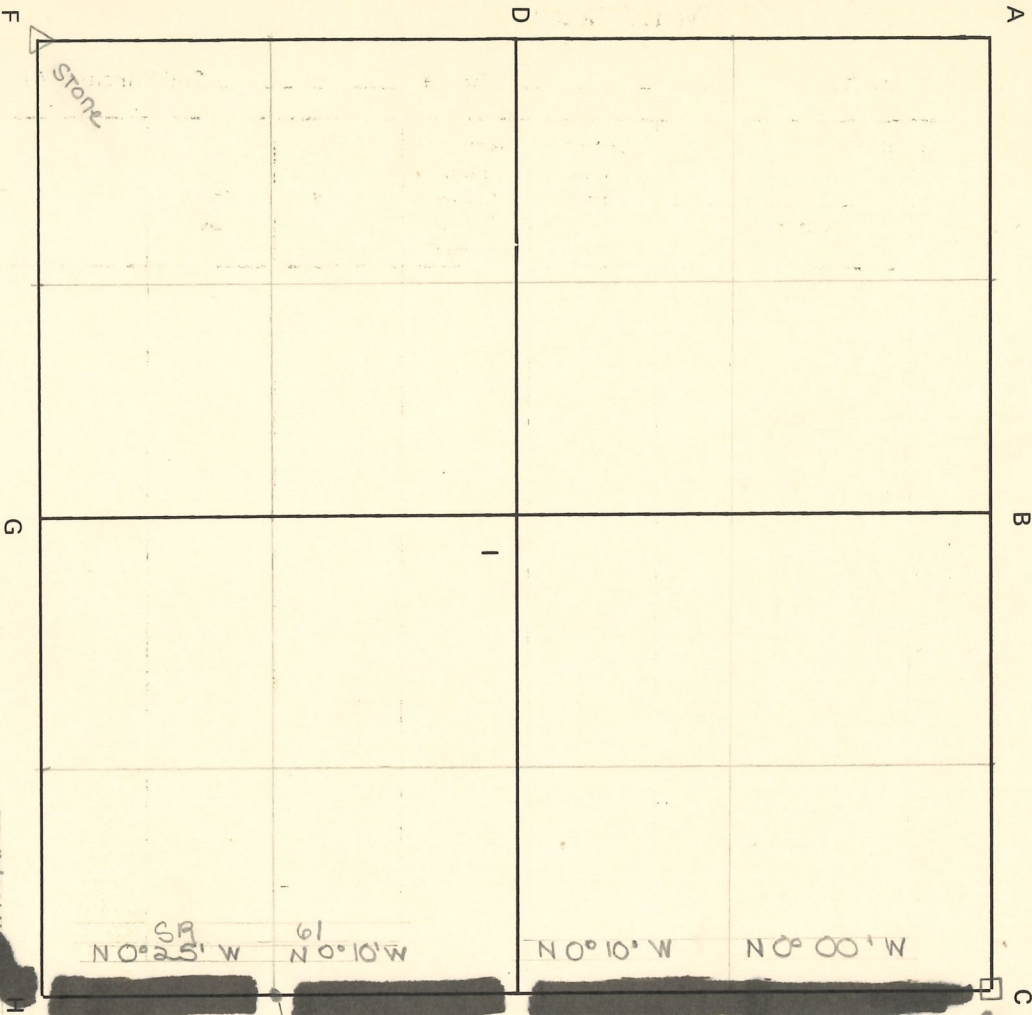
STONE CORNER ON
SECTION LINE N-G
CO RD PLANS - E. ABBOTT
1940 ?

PIPE CO.
IP CALLED

NOTES

Section 33 Township 3 South Range 8 West 2nd P.M.

CORNER CODE SYSTEM
Warrick County



STONE CALLED
DATE: UNKNOWN 1940?
CO. RD. PIANS - E. ABBOTT

30' R/W EA. SIDE

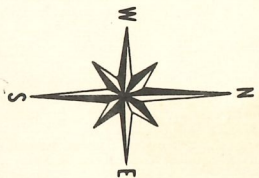
30' R/W EA. SIDE

NOTES

James Logan + Hazel Edith Leslie
Pt. NE 1/4 SE 1/4
PB 4 PG 52

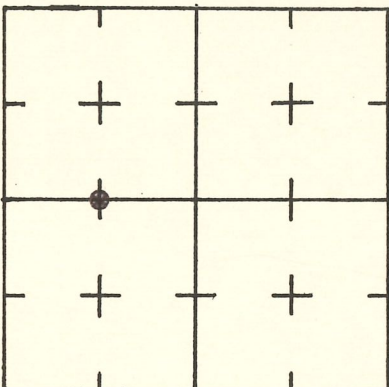
CORNER RECORD
WARRICK COUNTY

WARRICK COUNTY SURVEYOR
MICHAEL F. FELDBUSCH, L.S.

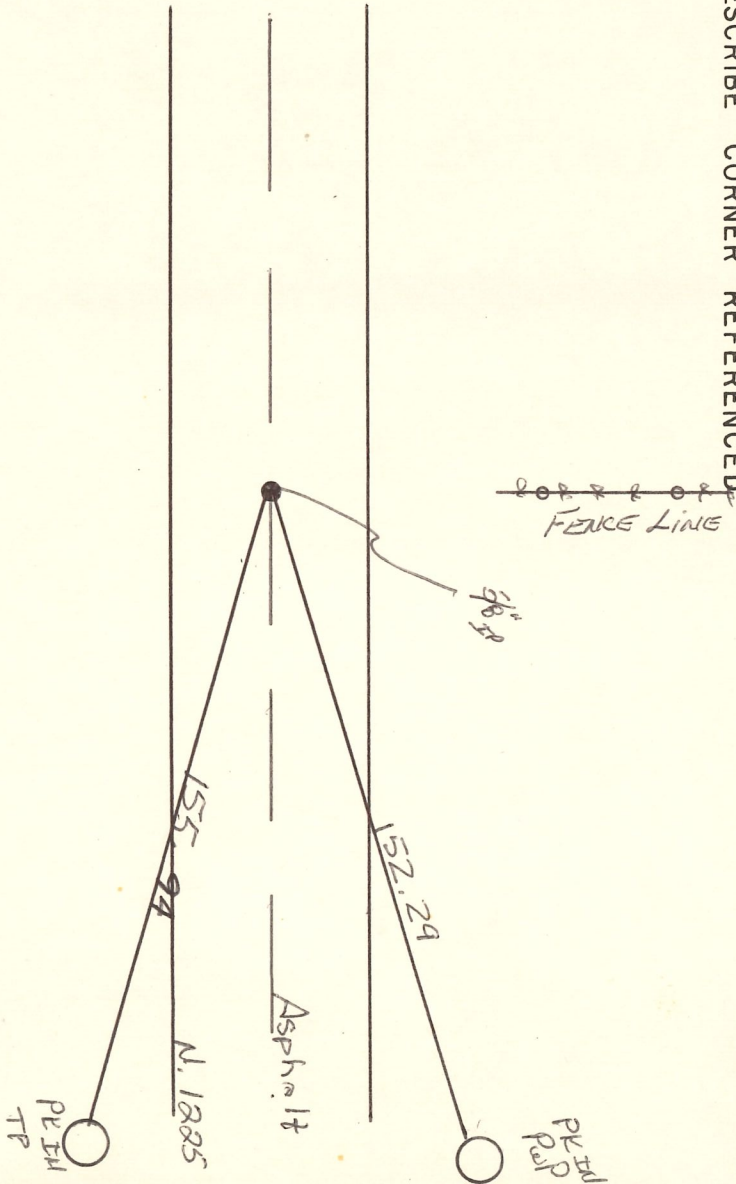


DESCRIPTION:
SW CORNER NW 1/4 SE 1/4
SECTION 33, T. 3 S. R. 8 W.
2nd PRINCIPAL MERIDIAN

INDICATE CORNER REFERENCED



DESCRIBE CORNER REFERENCED



STATE PLANE COORDINATE DATA

INDIANA ZONE: WEST

X _____

Y _____

ESTABLISHED BY: _____

APPROVED BY:

SET BY: Mike Feldbusch

DATE

REFERENCED BY:

Greg Beck & Mike Irwin

DATE

3/15/89

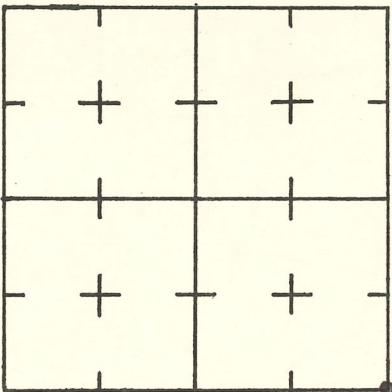
CORNER RECORD
WARRICK COUNTY

WARRICK COUNTY SURVEYOR
MICHAEL F. FELDBUSCH, L.S.

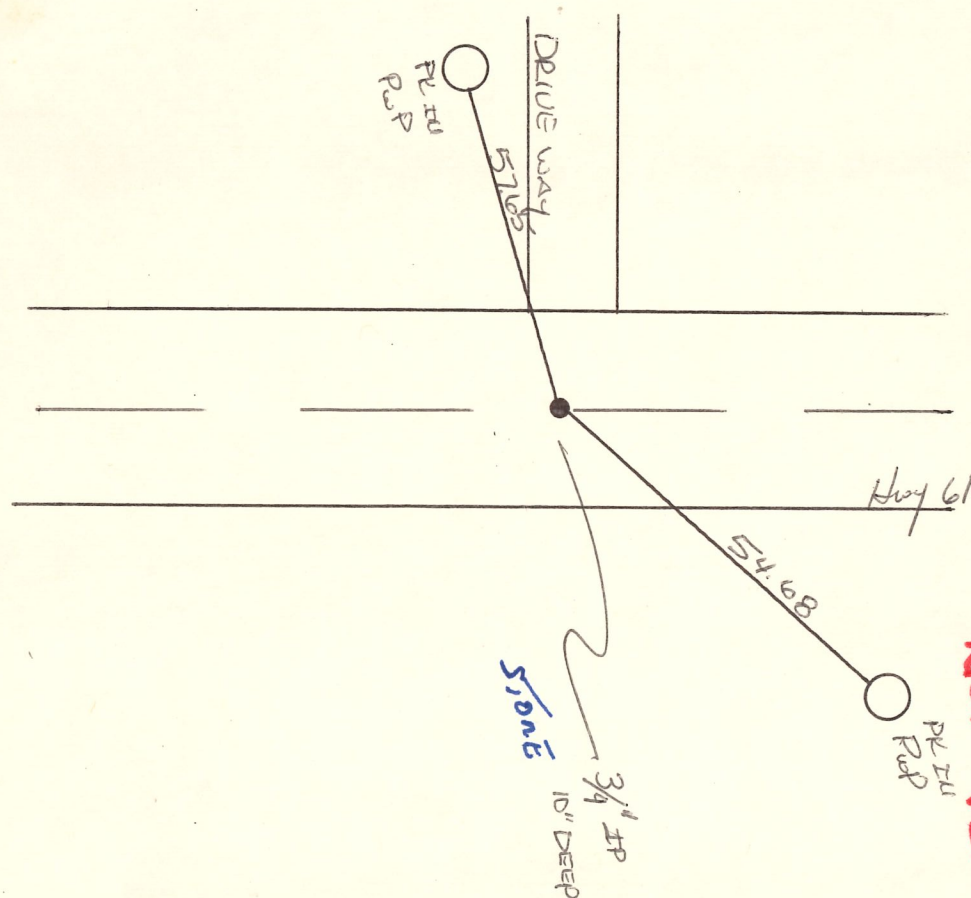


DESCRIPTION:
N5 CORNER N54 N54
 SECTION 33, T. 3 S., R. 8 W.
 2nd PRINCIPAL MERIDIAN

INDICATE CORNER REFERENCED



DESCRIBE CORNER REFERENCED



NOT VERIFIED

STATE PLANE COORDINATE DATA

INDIANA ZONE: WEST

X _____

Y _____

ESTABLISHED BY: _____

APPROVED BY

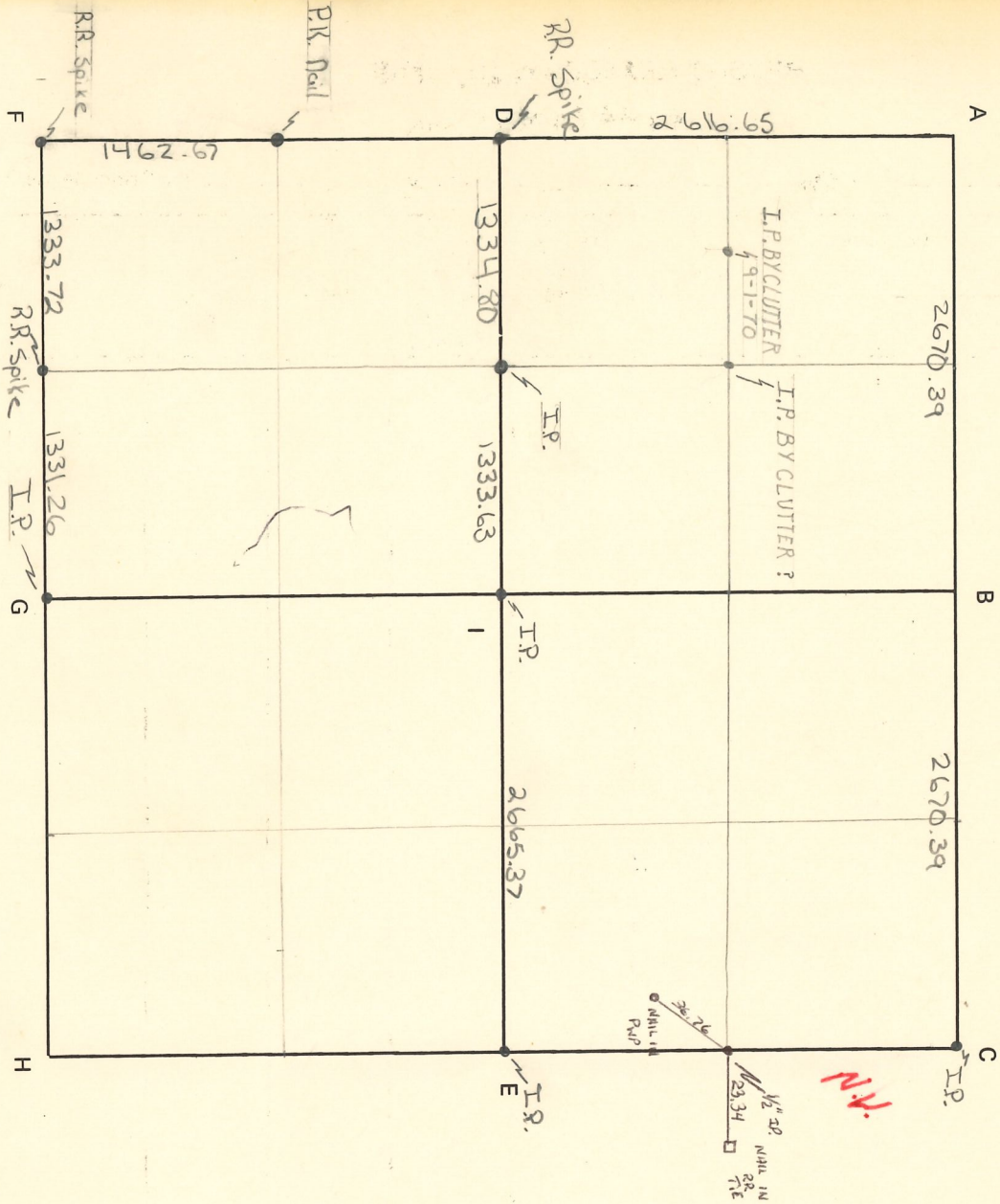
DATE

REFERENCED BY:

DATE

Handwritten signature: Doug Beck

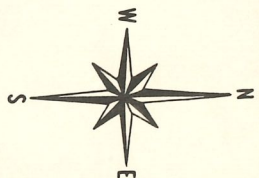
Handwritten date: 3/13/84



NOTES

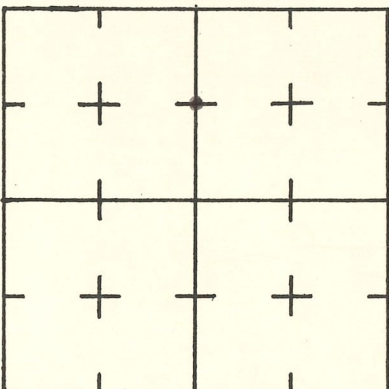
CORNER RECORD
WARRICK COUNTY

WARRICK COUNTY SURVEYOR
MICHAEL F. FELDBUSCH, L.S.

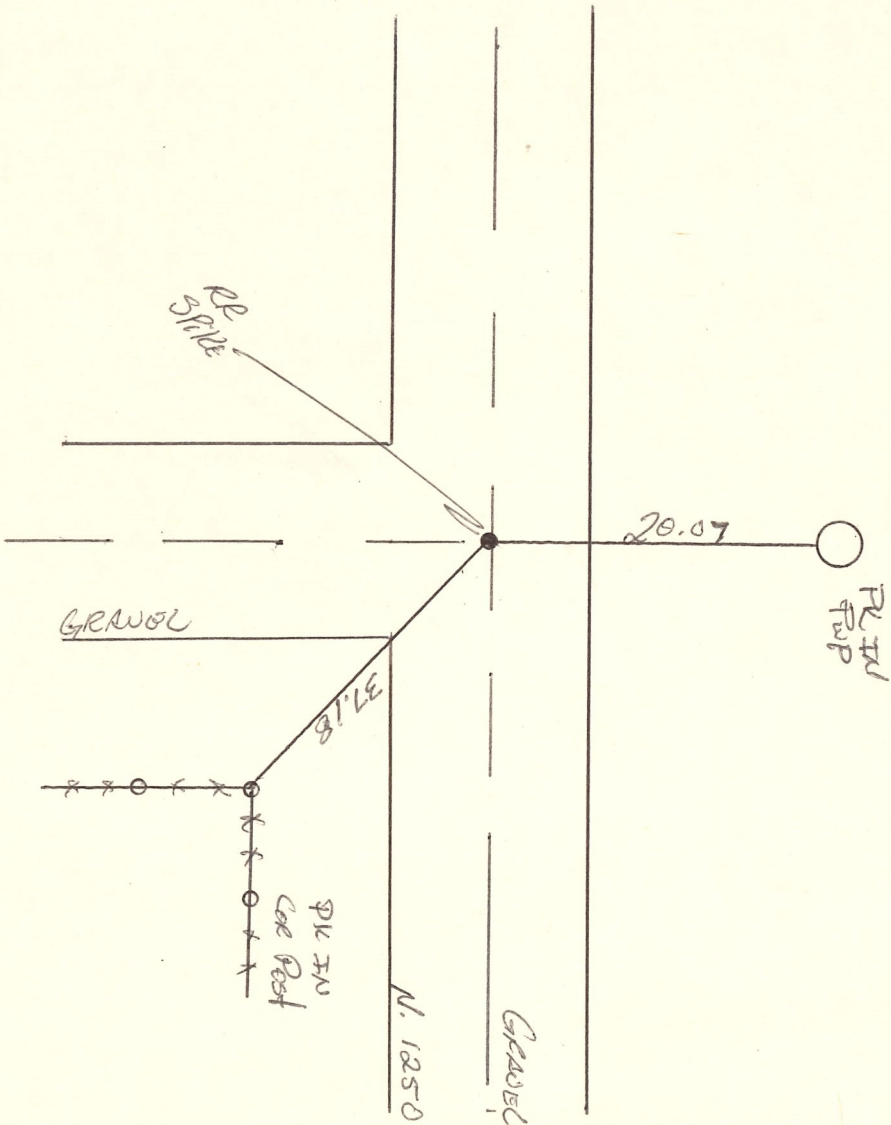


DESCRIPTION :
SE CORNER Sec 14 N12 1/2
 SECTION 35, T. 3 S., R. 8 W.
 2nd PRINCIPAL MERIDIAN

INDICATE CORNER REFERENCED



DESCRIBE CORNER REFERENCED



STATE PLANE COORDINATE DATA

INDIANA ZONE: WEST

X _____

Y _____

ESTABLISHED BY: _____

APPROVED BY _____

DATE _____

REFERENCED BY: _____

DATE _____

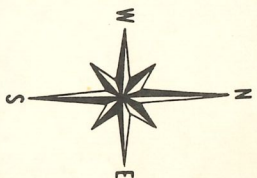
Henry Buck

3/13/89

NOT VERIFIED

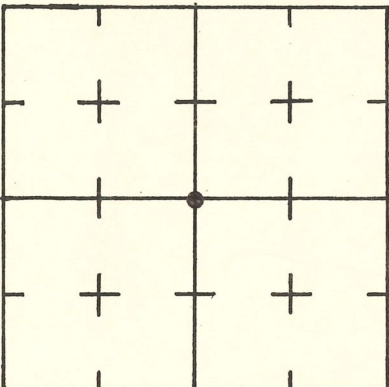
CORNER RECORD
WARRICK COUNTY

WARRICK COUNTY SURVEYOR
MICHAEL F. FELDBUSCH, L.S.



DESCRIPTION: CENTER OF SEC.
CORNER _____
SECTION 35, T. 3 S., R. 8 W.
2nd PRINCIPAL MERIDIAN

INDICATE CORNER REFERENCED



STATE PLANE COORDINATE DATA

INDIANA ZONE: WEST

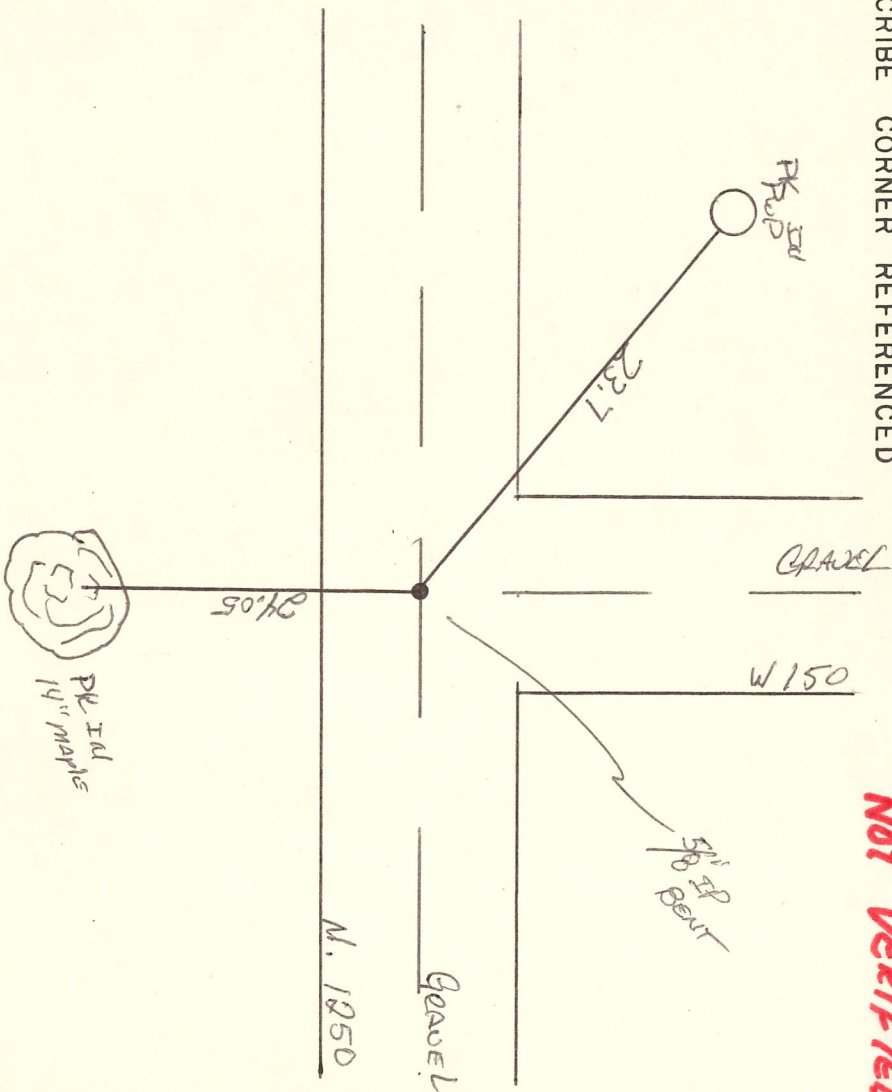
X _____

Y _____

ESTABLISHED BY: _____

APPROVED BY _____

DESCRIBE CORNER REFERENCED



NOT VERIFIED

DATE _____

REFERENCED BY: _____

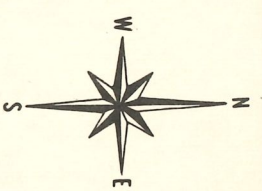
DATE _____

My Book

3/13/84

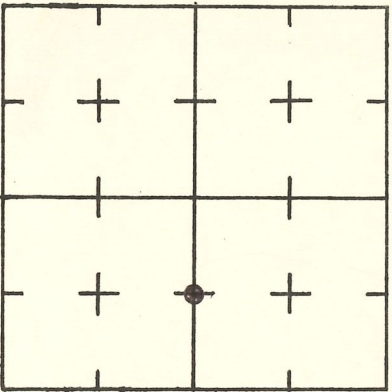
CORNER RECORD
WARRICK COUNTY

WARRICK COUNTY SURVEYOR
MICHAEL F. FELDBUSCH, L.S.

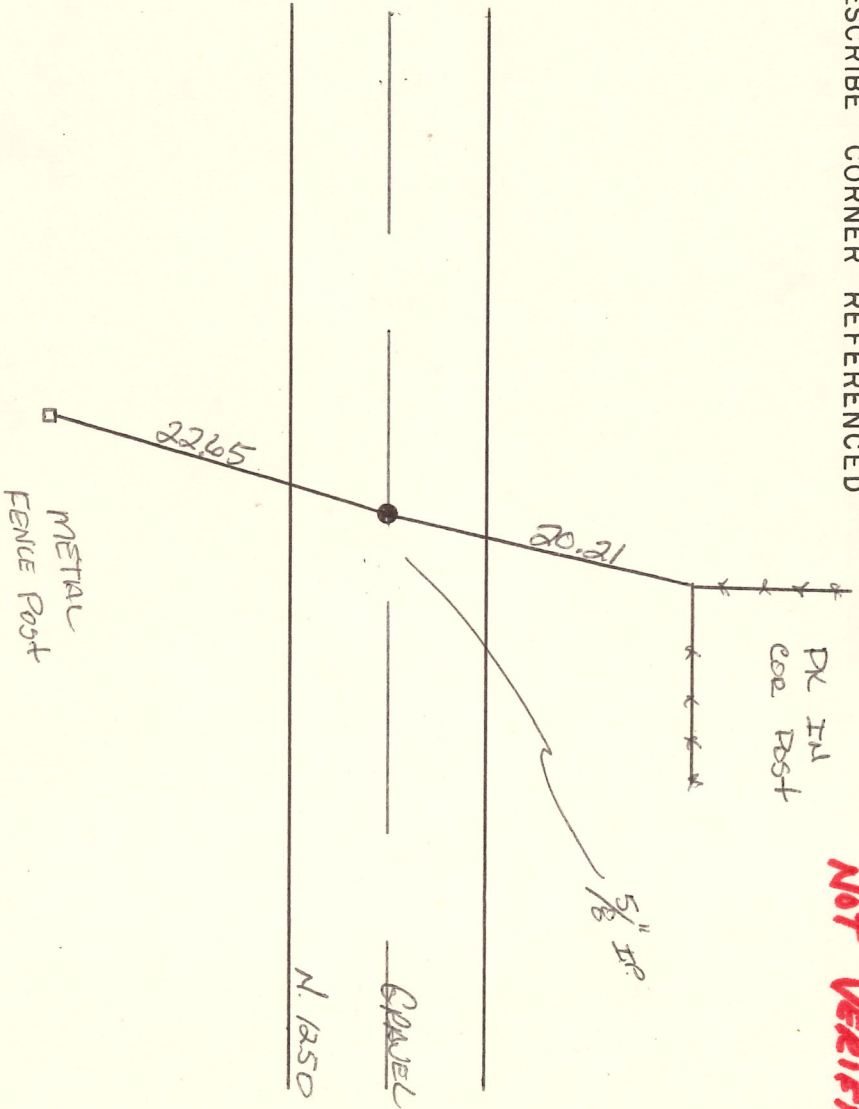


DESCRIPTION :
SE CORNER S¹/₄ NE¹/₄
 SECTION 35, T. 3 S., R. 8 W.
2nd PRINCIPAL MERIDIAN

INDICATE CORNER REFERENCED



DESCRIBE CORNER REFERENCED



NOT VERIFIED

STATE PLANE COORDINATE DATA

INDIANA ZONE: WEST

X _____

Y _____

ESTABLISHED BY: _____

APPROVED BY _____

DATE _____

REFERENCED BY: _____

DATE _____

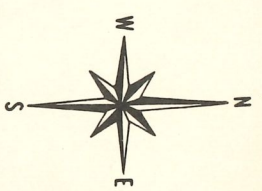
My Back

3/13/84

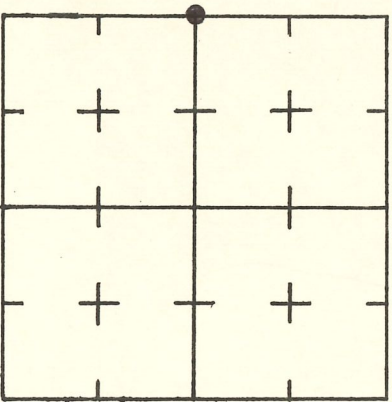
CORNER RECORD
WARRICK COUNTY

DESCRIPTION :
SW CORNER SW 1/4 NW 1/4
 SECTION 35, T. 3 S. R. 8 W.
2nd PRINCIPAL MERIDIAN

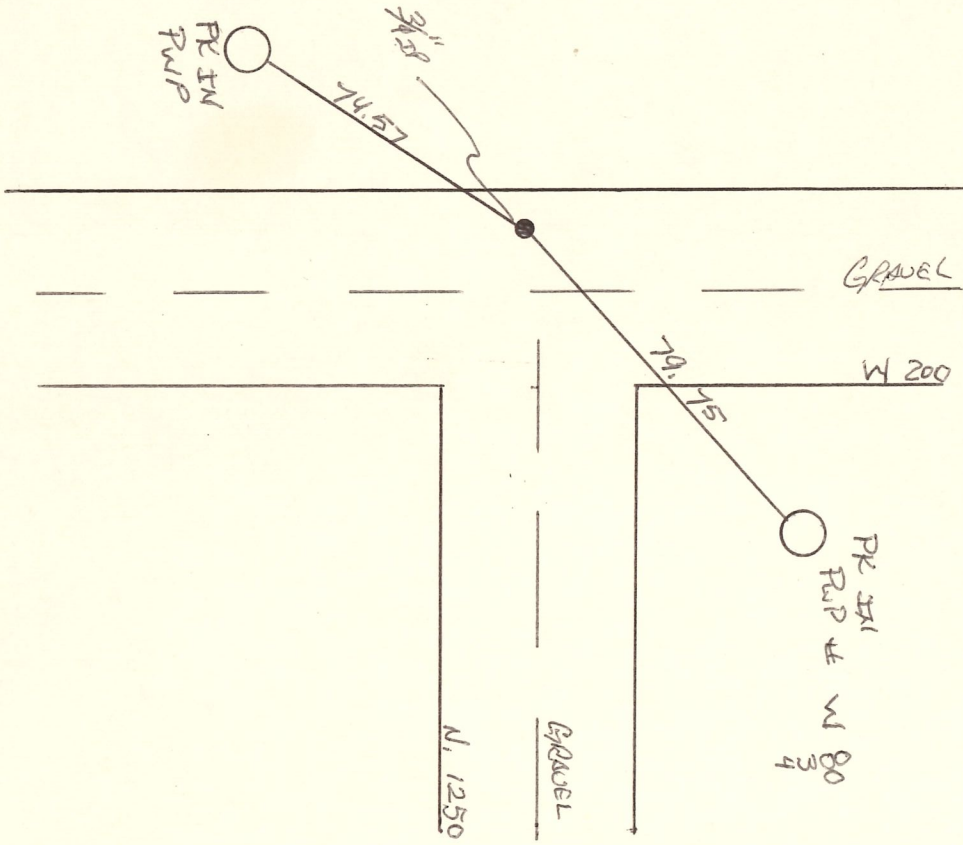
WARRICK COUNTY SURVEYOR
 MICHAEL F. FELDBUSCH, L.S.



INDICATE CORNER REFERENCED



DESCRIBE CORNER REFERENCED



NOT VERIFIED

STATE PLANE COORDINATE DATA

INDIANA ZONE: WEST

X _____

Y _____

ESTABLISHED BY: _____

APPROVED BY

DATE

REFERENCED BY:

DATE

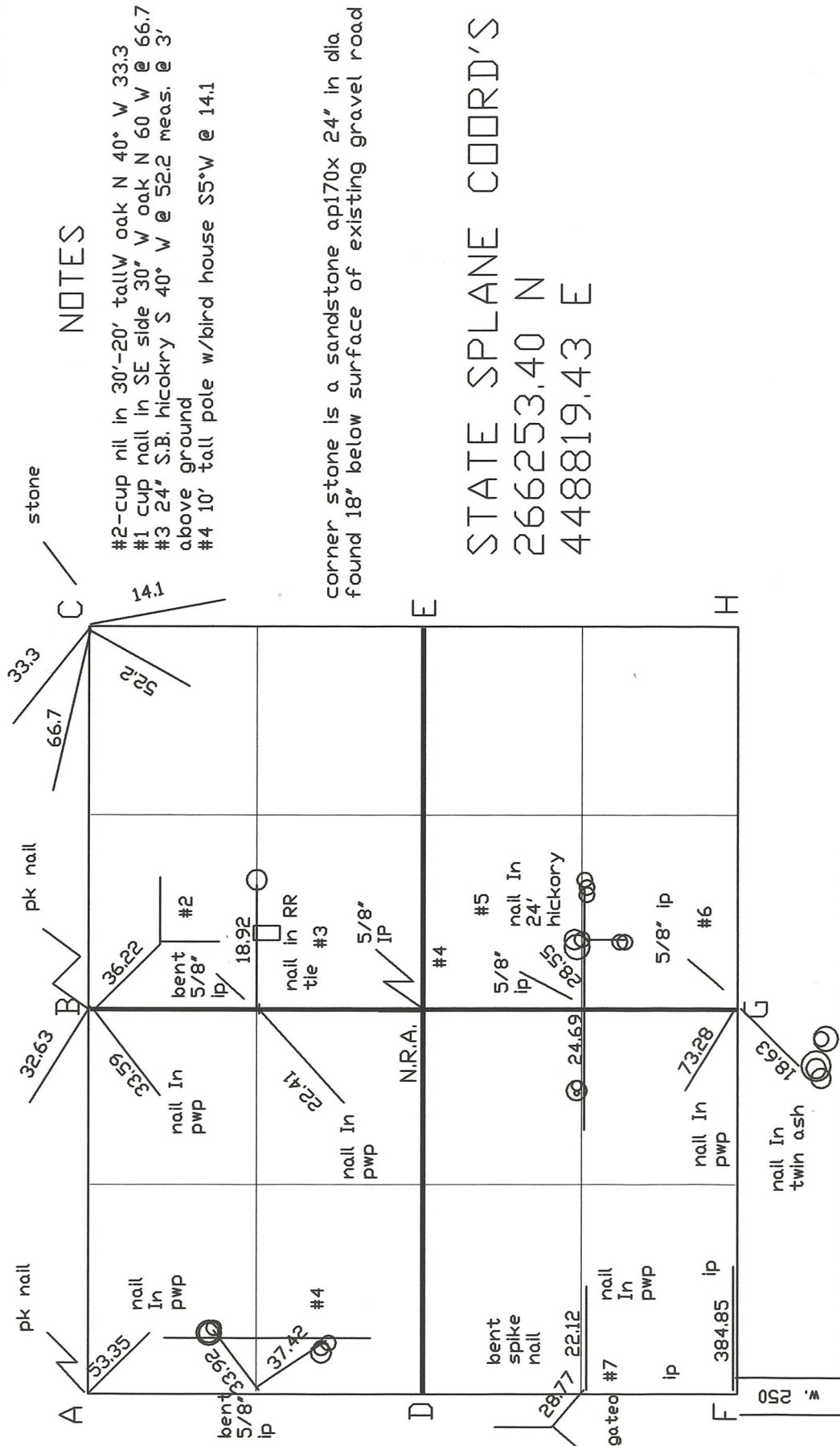
Henry Book

3/13/84

CORNER RECORD
 WARRICK COUNTY
 WARRICK COUNTY SURVEYOR

DESCRIPTION

SECTION 26-1, T 3 S, R. 8 W



NOTES

- #2-cup nil in 30'-20' tall W oak N 40° W 33.3
- #1 cup nail in SE side 30° W oak N 60° W @ 66.7
- #3 24" S.B. hickory S 40° W @ 52.2 meas. @ 3' above ground
- #4 10' tall pole w/bird house S5°W @ 14.1

corner stone is a sandstone op170x 24" in dia. found 18" below surface of existing gravel road

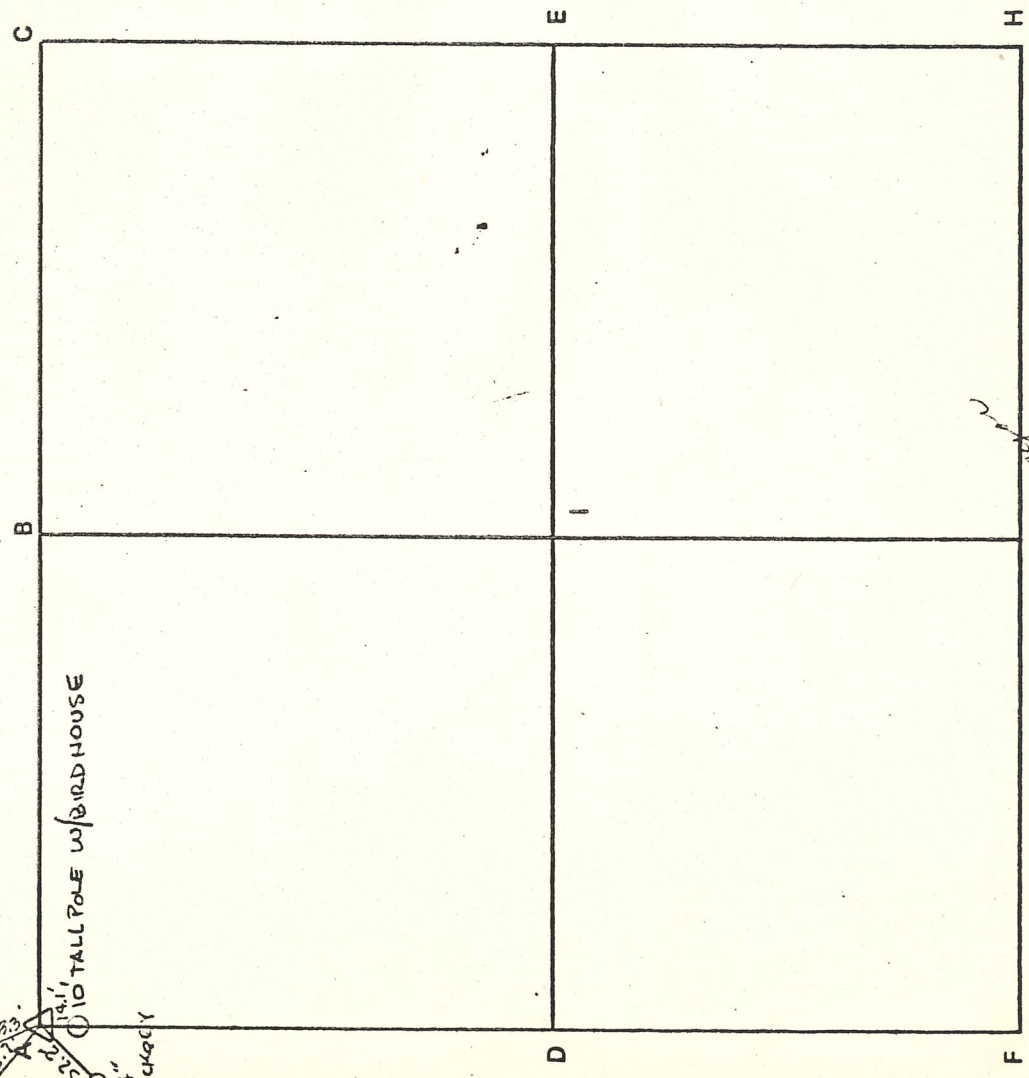
STATE SPLANE COORD'S
 266253.40 N
 448819.43 E

RECORD OF SECTION CORNERS
Warrick County

Section 25 Township 3 South Range 8 West 2nd Principle Meridian

Date	Cor	Location	Description of		Distance from Corner	Bearing from Corner (North Assumed)	Cond	Check By	Remarks	
			Monument	Reference						
1977 Sept.	A		24" Sandstone				Fair		Cupnail in SE Side	
				30" W. Oak		66.7'				N-60°-W
				30"-20' Tall W. Oak		33.3'				N-40°-W
				24" S.B. Hickory		52.2'				S-40°-W
			10' Tall Pole w/Bird House		14.1'	S- 5°-W			Measured @ 3' above ground-No Shiner	

CORNER CODE SYSTEM
Warrick County



30" W. OAK
 56" W. OAK
 14' 1" TALL POLE W/ BIRDHOUSE
 24" HICKORY

NOTES

A 5' wide, 3' deep trench was dug starting at existing Nuhring fence and digging north on line with point set by J. Latta for approx. corner.

Corner stone was found approx. 18" below surface of existing road and 9' north of point set by J. Latta.

Corner stone is a sandstone monument approx. 24" in diameter.

STATE PLANE COORD'S

266253.40 N
 448819.43 E

ESTABLISHED BY:

OLD BEN COAL CO.
 OAKLAND CITY, IND.
 9-1-77

Survey to 1-2-77

David W. Drake